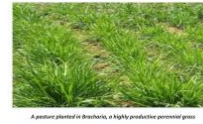


Best practices in pasture management: Pasture Improvement

Revitalize Your Pastures, Sustain Your Livestock



This technology aims to enhance productivity in managed pastures through intensive management practices like fertilization, seeding, and irrigation. It includes controlling weeds, partially disturbing the land, and introducing high-yield grasses and legumes, along with other methods such as planting grazing species in croplands and establishing shrub hedgerows.

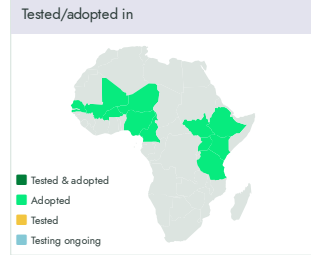
International Livestock Research Institute (ILRI)
Tunde Amole

Technology from
ProPAS

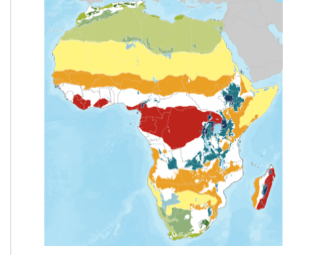
Commodities
Small livestock

Sustainable Development Goals

Categories
Pre-production, Practices, Animal feed management



Where it can be used
This technology can be used in the colored agro-ecological zones.



Target groups
Farmers

This technology is **TAAT1 validated**.
 7·8
 Scaling readiness: idea maturity 7/9; level of use 8/9

Project adoption **1**
Technology integrated in the ENSURE project.

Inclusion assessment **4**

Climate impact **7**

- ### Problem
- Limited Access to Affordable Feed
 - Inefficient Pasture Establishment
 - Climate and Region-specific Challenges
 - Weed Invasion and Reduced Productivity
 - High Costs of Pasture Establishment
 - Limited Knowledge Sharing and Accessibility

- ### Solution
- Provides cost-effective methods for establishing pastures.
 - Reduces reliance on expensive purchased feed.
 - Equips producers with valuable pasture management skills.
 - Advises on suitable species and management practices.
 - Tailors advice to the region's climate and conditions.
 - Offers strategies for weed management and productivity.

Key points to design your program

Pasture Improvement can be integrated into livestock development, food security, climate resilience, and sustainable land management programs to increase feed availability, improve livestock productivity, and strengthen resilient grazing systems. Its adoption contributes to SDG 1 (No Poverty), SDG 2 (Zero Hunger), SDG 13 (Climate Action), and SDG 15 (Life on Land).

To integrate this technology into your project, plan and budget for the following activities and prerequisites:

- Facilitate access to improved pasture seeds, forage inputs, irrigation systems, and pasture management services.
- Build partnerships with ILRI, research institutes, livestock cooperatives, extension services, seed suppliers, and private sector actors.
- Train livestock keepers on pasture establishment, grazing management, forage conservation, and sustainable land management.
- Promote women's and youth participation in forage production, seed multiplication, and livestock enterprises.
- Monitor pasture productivity, livestock performance, feed availability, land condition, and technology adoption.



Best practices in pasture management

<https://taat.africa/wqc>

Last updated on Jul 2, 2026 printed on Jul 9, 2026

Enquiries e-catalogs@taat.africa